

Improving Plots Using XAXISTABLE And YAXISTABLE

JACOB KEELEY, HENRY FORD HEALTH SYSTEM, DETROIT, MI

CARL NORD, ELI LILLY AND COMPANY, INDIANAPOLIS, IN

JACOB AND CARL BOTH GRADUATED FROM THE BIOSTATISTICS MASTER'S PROGRAM AT GRAND VALLEY STATE UNIVERSITY IN 2017, AND HAVE BEEN USING SAS FOR OVER 4 YEARS.

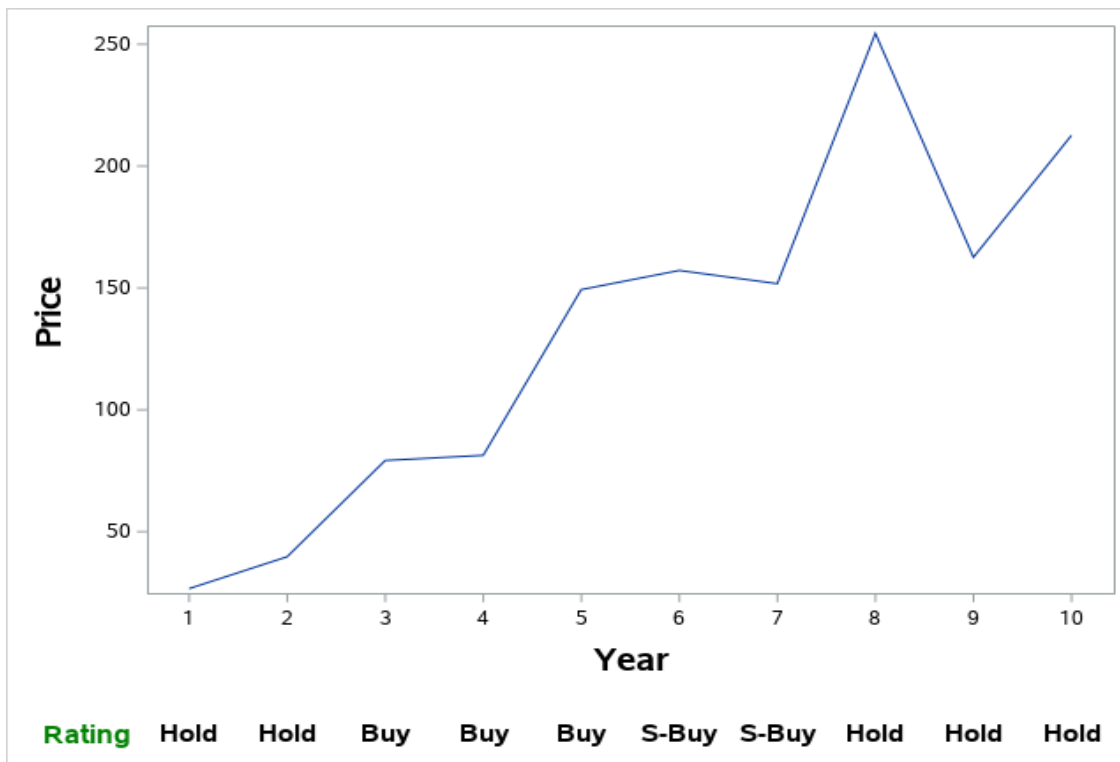


XAXISTABLE/YAXISTABLE STATEMENTS

- Aligned row/column of textual data
 - In relation to the primary plot
- Allows for additional information to be included in the plot
- The following primary plots are excluded:
 - BAND
 - BLOCK
 - FRINGE
 - REG
 - LOESS



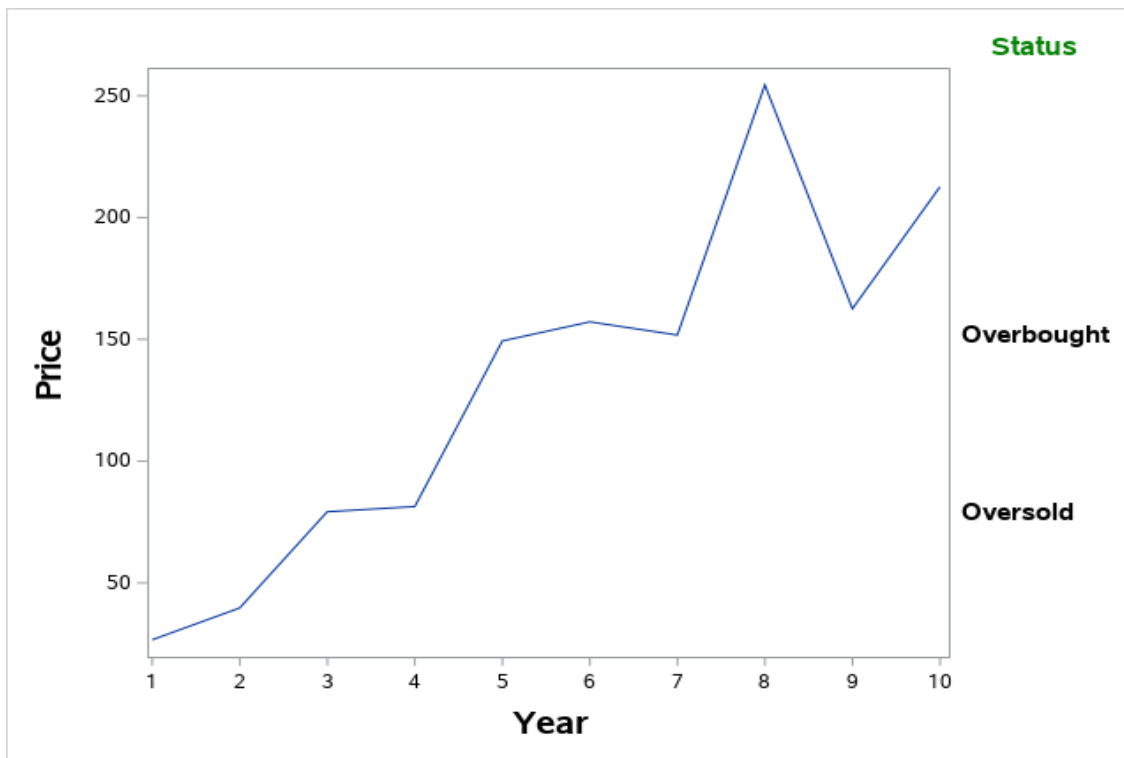
BASIC SYNTAX



```
proc sgplot data=dat;  
series x=Year y=Price;  
xaxistable Rating/  
valueattrs=(weight = bold size =  
11)  
labelattrs=(weight = bold size = 12  
color = green) pad = (top = 5pct) ;  
.  
.  
run;
```



BASIC SYNTAX



```
proc sgplot data=dat;  
series x=Year y=Price;  
yaxistable Status/  
valueattrs=(weight = bold size = 11)  
labelattrs=(weight = bold size = 12  
color = green);  
.  
.  
run;
```

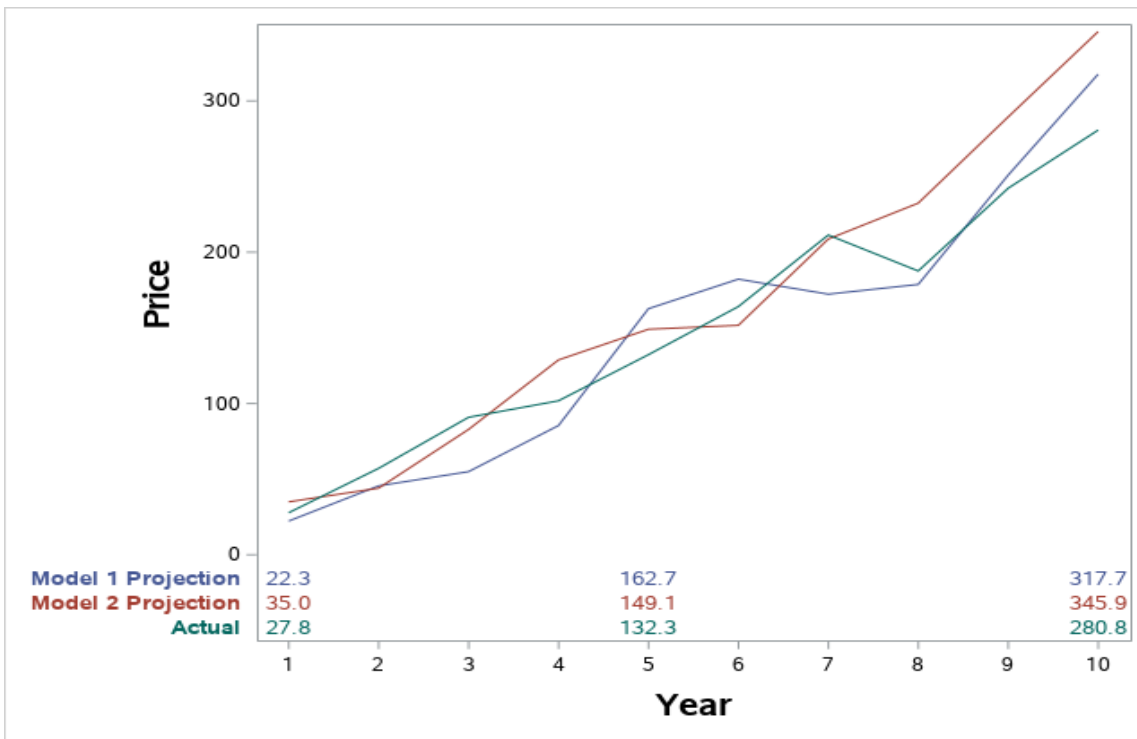


USEFUL OPTIONS

- Class – Creates a separate axis table for unique values
- X/Y – Variable to align the XAXISTABLE/YAXISTABLE to the axis
- Location – Specifies whether the axis table is inside or outside the axis area



PRACTICAL EXAMPLE



```
proc sgplot data=sales1 noautolegend;  
format Method method.;  
series x=Year Y=Price/group=Method;  
xaxistable Projection/  
  
...  
colorgroup = method  
class = method  
location=inside x = Year;  
  
.  
.  
run;
```



UTILIZATION IN SURVIVAL

- At Risk Table
- Output survival plot
- Tailor to specific project



Conclusion

- Useful addition to SGPLOT graphics
- Easily customizable
- Valuable in the context of survival analysis





Name: Jacob Keeley

Organization: Henry Ford Health System

E-Mail: JKeeley2@hfhs.org

Name: Carl Nord

Organization: Eli Lilly and Company

E-Mail: Nord_carl@lilly.com