

THE MICHIGAN SAS® USER GROUP NEWSLETTER

SPECIAL JUNE ONE-DAY CONFERENCE ISSUE

Visit our web site at www.MISUG.org

MAY 2005

EXPAND YOUR SAS SKILLS AT THE JUNE 16 MSUG ONE-DAY CONFERENCE



Plan now to attend the June 16 Michigan SAS Users Group meeting at Schoolcraft College in Livonia.

This affordable session offers SAS users at all experience levels ways to expand their expertise by attending presentations by leading SAS experts.

A total of eight 50-minute presentations will be offered at the June 16 event, addressing the latest in SAS BI (business intelligence) and ODS tools, as well as on SAS Macro Language facilities, SAS/GRAPH® and SAS/ETS® Software, and ways to work efficiently with large files.

“MSUG is pleased to offer area users an all-star roster of SAS expertise on June 16,” said, Nancy Brucken, of i3Statprobe and MSUG Conference Co-Chair. “Our speakers are the same folks you’d normally expect to travel to a SUGI or regional conference to hear, but on June 16 they are coming to the Detroit area, so this is an opportunity that should not be missed,” she remarked. “In addition to Cynthia Zender and Chris Hemedinger of SAS,” Nancy explained, “MSUG has also invited independent experts Art Carpenter and Andrew Karp to be with us on

June 16, both well-known in the SAS community.”

The early registration fee of \$60 per person (by May 28) includes attendance, materials, continental breakfast, lunch and afternoon refreshments. You are also eligible for a \$40 per person per seminar discount on the one-day MSUG-sponsored training seminars if you register for them, and for the one-day conference, by May 28.

Please see page two of this newsletter for additional registration details. On-line registration is available at www.regonline.com/

Highlights of June

MSUG Events

- One-Day Conference on June 16 Offers an Array of Presentations on Leading-Edge SAS Tools
- MSUG-Sponsored Training Seminars in Livonia and Dearborn June 14, 15, 17, 18 and 21
- Early Registration Discounts for Conference and Training Seminars End on May 28
- On-Line Registration for all June Events at www.Regonline.com/ MSUG

Inside this issue:

June 16 Meeting Details	2
Presentation Abstracts	3
Presentation Abstracts	4
Presenter Bios	5
MSUG-sponsored training seminars	6
BBU is Now SAS Press	7
Registration Details; About MSUG	8

MWSUG 16 REGIONAL CONFERENCE OCT. 9-11 IN CINCINNATI

“Tall Stacks...Tall on SAS” is the theme of MWSUG 16, the sixteenth annual meeting of the regional Midwest SAS Users Group. The event will be held in downtown Cincinnati October 9-11 at the Hilton Netherland Hotel.

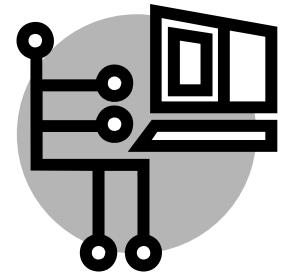


The conference starts on Sunday evening, October 9 with a Keynote Address by a SAS Institute speaker and opening night reception. Two full days of paper presentations and other ways to learn about the latest in SAS technology are offered on October 10 and 11. Attendees are able to meet see the latest in SAS technology and publications by visiting the always-popular Demonstration Area. For more information, please go to www.MWSUG.org

THE MICHIGAN SAS® USER GROUP NEWSLETTER

JUNE 16, 2005 ONE-DAY MICHIGAN SUG CONFERENCE

- **Where:** Vistatech Center, Schoolcraft College
18600 Haggerty Road, Livonia, MI 48152
- **When:** 8:00 am to 5:00 pm Thursday, June 16
- **Tuition:** \$60 per person if registration completed by May 28, 2005, \$75 per person thereafter. Includes attendance, continental breakfast, lunch, afternoon refreshments and materials, Please see refund and registration policies on page 8 of this newsletter.
- **Registration:** On-line at www.regonline.com/MSUG. The on-line system is easy to use and provides secure payment via MasterCard, American Express, Discover, and Visa, as well as enrollment confirmation via-email, printable receipts/invoices and automatic reminders via e-mail. We accept payment via check and credit card. *Sorry, no purchase orders.*



**Register On-Line at
www.regonline.com/MSUG**

Papers Scheduled for Presentation on June 16

(see pages three and four for presentation abstracts, page six for speaker biographies)

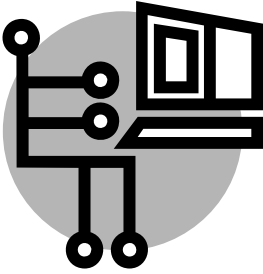
- Cynthia Zender, SAS
 - **Counting the Ways to Excel**
 - **The Power of Table Templates and DATA _NULL_**
- Chris Hemedinger, SAS
 - **Boost Your SAS Programming Productivity with SAS Enterprise Guide**
 - **Filling the Gap: Extending the SAS BI Server with Custom Tasks**
- Art Carpenter, California Occidental Consultants
 - **Extreme Graphics Makeover: Using SAS/GRAPH® Software to Get the Results You Need**
 - **SAS Macro: Symbols of Frustration: %LET Us Help? A Guide to Debugging SAS Macros**
- Andrew Karp, Sierra Information Services
 - **Tips & Techniques for Large Files**
 - **Time Series Magic: Using PROC EXPAND**

(note: program and speakers subject to change)

The June 16 MSUG One-Day Conference offers you an affordable and unparalleled opportunity to enhance your SAS Software skills by attending presentations given by leading experts. The agenda offers a full day of learning opportunities for SAS users at all experience levels...we look forward to seeing you at our meeting!
— Gary Allen, RDA Group and MSUG One-Day Conference Co-Chair

Note: SAS is a registered trademark of SAS Institute in the USA and other countries. ® indicates USA registration.

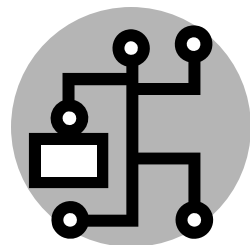
PRESENTATION ABSTRACTS FOR THE JUNE 16 MEETING (CONTINUED ON PAGE 4)



Please share this newsletter with your fellow SAS Software users!

MSUG's June one-day conference and sponsored training seminars offer you ways to improve your skills as a SAS user and to learn about the latest SAS Software capabilities. The MSUG Conference Committee looks forward to welcoming you to our events in June!

— Paul Slagle, *i3Stat-probe* and MSUG Conference Co-Chair



Make Plans Now to Attend MWSUG 16!
(see article on page 1)

Boost Your Programming with SAS Enterprise Guide®

- **Chris Hemedinger, SAS**

SAS Enterprise Guide (with its easy-to-use interface) has been a boon to SAS users, especially non-programmers. However, SAS Enterprise Guide provides some powerful new features that are geared toward the SAS programmer, including an integrated process-flow view of your project; the ability to create, publish, and execute stored processes; and increased flexibility for output format and destination with the SAS Output Delivery System (ODS). This paper provides an overview and detailed examples of how SAS programmers can leverage SAS Enterprise Guide to create, organize, and execute their programs.

Filling the Gap: Extending the SAS BI Server with Custom Tasks

- **Chris Hemedinger, SAS**

SAS Enterprise Guide and the SAS Add-In for Microsoft Office ship with dozens of tasks for data manipulation, analysis, and reporting. But even so, it won't take you long to think of a particular task that is not covered by the product "out of the box". You can always resort to using the code editor to create the results that you want, but what about when you want to create a repeatable task, or a task that you would like to present to an end-user who has little-to-no SAS programming experience? SAS Enterprise Guide and the SAS Add-In for Microsoft Office are extendable with custom tasks, which you can now create by using standard off-the-shelf development tools. This paper provides an overview of the add-in architecture plus an example task that uses Microsoft .NET tools and technology to provide a new feature to the application.

Counting the Ways to Excel

- **Cynthia Zender, SAS Institute**

Do you need to get SAS data sets or SAS procedure output into Excel? Are you sure you're using the right technique for your requirements? This presentation outlines all the ways to get information from BASE SAS to Microsoft Excel™. The method you choose depends on whether you're dealing with a SAS data set or SAS procedure output. Topics include using the SAS EXCEL Libname engine; using PROC EXPORT; and, using ODS to create CSV, HTML and XML files that can be opened by Excel. A demo of the SAS Add-In for Microsoft Office will also be provided. Also covered will be a brief overview of non-SAS technology, such as DDE, and ODBC. Relevant SAS code will be provided for the BASE SAS techniques. Selected non-SAS techniques will be discussed, but not demonstrated.

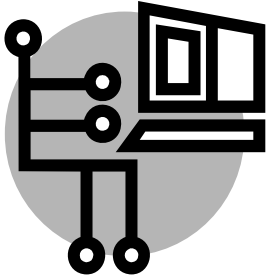
The Power of TABLE Templates and DATA _NULL_

- **Cynthia Zender, SAS Institute**

Are you a DATA STEP programmer? Do you want to route DATA _NULL_ output to the Output Delivery System. Do you want to convert "classic" DATA _NULL_ and FILE PRINT programs to take advantage of the Output Delivery System?

This paper will show you how to create and use a custom table template for use with a DATA _NULL_ program. Through the use of concrete examples, you will learn how to become a power user of custom table templates and DATA _NULL_. The topics covered include: defining a new table template, defining headers and footers, using generic columns and performing traffic lighting based on data cell values. Use of a custom style template with a custom table template is briefly covered.

PRESENTATION ABSTRACTS FOR JUNE 16 MEETING (CONTINUED FROM PAGE 3)



The June 16 MSUG meeting offers everyone a way to enhance their SAS skills, regardless of their current experience level with the product...we look forward to seeing you at our meeting!

Tips & Techniques for Large Files

- **Andrew Karp, Sierra Information Services**

This presentation is suited for beginning to intermediate users of the SAS System who work with large raw data files, as well as large SAS data sets. You will learn various ways to test your code on subsets of a large file or data set before applying them to the entire file, how to apply the WHERE clause data set option instead of creating subset data sets, and how to control the movement of observations in to and out of the program data vector during the data step's execution phase so that less time is required to process your file. We will also discuss how to reduce the size of your data sets, create multiple SAS data sets in a single data step,

Time Series Magic: Using PROC EXPAND with Time Series Data

- **Andrew Karp, Sierra Information Services**

This presentation shows you the core functionalities of PROC EXPAND, a little-known but extremely powerful SAS/ETS™ Software procedure. Among the tools available in PROC EXPAND are: estimation of missing values in a time series, aggregation of data from a higher to a lower sampling frequency, interpolation of higher frequency data from observations taken at a lower frequency, and a wide range of transformation operations, such as calculation of moving averages, moving sums and other values. We will also take a look at SAS date “alignment operators” and their role with PROC EXPAND. By attending this presentation you will gain an appreciation of how PROC EXPAND can potentially save you from tedious data step “clean up” of your time series data, as well as relieve you of having to write intricate code to calculate “moving time window” statistics.

Extreme Graphics Make-Over: Using SAS/GRAPH® Software to Get the Graphical Output You Need

- **Art Carpenter, California Occidental Consultants**

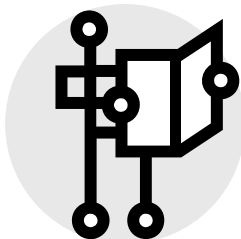
Back in the days of the mainframe, creating presentation quality graphs was a challenge, but with the current versions of SAS/GRAPH customizing your graphical output can be quite easy. Easy that is, once you know which of the many graphical statements and options to use. Through a series of exercises you will learn how to dress up your GPLOT-generated graphs. You will quickly learn how to customize titles, footnotes, axes, and plotting symbols, as well as how to add reference lines, legends and notes to highlight specific messages in your data. You will also gain an understanding of how specific GOPTIONS and global statement options interact to create your finished product.

SAS Macro: Symbols of Frustration: %LET Us Help? A Guide to Debugging Macros

- **Art Carpenter, California Occidental Consultants**

Are you just learning to write MACROS? Are you baffled by when to use single quotes and double quotes - or one inside the other? Are you confused by when to use statements such as DO versus %DO? Want to know the difference between a GLOBAL and LOCAL Macro variable? Do you have macros that don't give the right results yet don't give error messages either?

This presentation introduces a few MACRO concepts that are often misunderstood. You'll also learn how to use options such as MPRINT and SYMBOLGEN, and statements such as %PUT, to help you determine why your macro doesn't run, or why it does run but gives you the wrong results.



Learn about the latest releases from SAS Press on page seven.

SPEAKER BIOGRAPHIES: ONE-DAY CONFERENCE

Art Carpenter's publications list includes three books, and over four dozen papers and posters presented at SUGI, and at various regional and local user group meetings. Art chaired SUGI 28 in Seattle and is also Chair of the San Diego SAS Users Group. He has received Best Paper awards at numerous conferences, including MWSUG 2003. Art has been using SAS since 1976 and is a SAS Certified Professional™. Through California Occidental Consultants he teaches SAS courses and provides contract SAS programming support nationwide. Art enjoys hiking and other outdoor activities, and has climbed to the top of Mt. Whitney, the tallest point in the continental United States, many times.

Chris Hemedinger is a software manager in the Business Intelligence Clients division at SAS. He has worked on Enterprise Guide since the product was first started. Chris began his career at SAS in the SAS Publications division. As a technical writer, he created user guides and online help for SAS on Windows and OS/2, and also worked on the team that introduced the comprehensive SAS OnlineDoc. One of Chris' first contributions to Enterprise Guide was as puppeteer for the now (sadly) retired animated Genie character that appeared in early releases of the product.

Andrew Karp started Sierra Information Services, a SAS Software consulting and training firm, in 1994, after working at Federal Express, Price Waterhouse Coopers, Pacific Gas & Electric Company and Kaiser Health Plan. A 22-year SAS user, he has been an Invited Speaker at ten consecutive SUGI conferences and has presented papers on SAS Software topics at conferences in 11 countries, including, most recently, the People's Republic of China. He received Best Paper awards at MWSUG 2000 and 2003. Like Cynthia Zender (see below), Andrew first started using SAS Software at The George Washington University.

Cynthia Zender is Data Presentation Curriculum Manager for the Professional Services Division of SAS, where she is responsible for the report writing and ODS curriculum. Cynthia currently divides her time between instructing and curriculum development. Her "data bashing" and report writing career began at The George Washington University, where she was both an employee and a student. She continued her SAS programming at Potomac Electric Power Company; Econometric Research, Inc; 2W Systems; and MCI (among others) before she finally joined SAS in 1996.



THANK YOU FROM THE MICHIGAN SAS USERS GROUP !



The Michigan SAS Users Group would like to thank SAS Institute for their continuing assistance, including their support for our June 16 one-day conference. Marti Dominick of User Group Support was instrumental in arranging for Cynthia Zender and Chris Hemedinger to be our "SAS Speakers" at the meeting, and also worked with Lynne Scullen, also of User Group Support, to have this newsletter to be printed and mailed to SAS customers in our area. We also greatly appreciate the work SAS' Reprographics unit has done to duplicate, address and mail our newsletter.

THE MICHIGAN SAS® USER GROUP NEWSLETTER

MSUG-SPONSORED SAS TRAINING SEMINARS

Area SAS users can further enhance their SAS programming skills by attending the one-day training seminars offered by Art Carpenter and Andrew Karp in conjunction with our June 16 conference. You can easily register for both their seminars and the conference using the same on-line registration system at www.regonline.com/MSUG.

Tuition without conference attendance is \$299 per person per daily seminar, and \$259 per person per with conference attendance if you complete registration by May 28. On/after May 29 seminar tuition is \$329 per person per daily seminar.

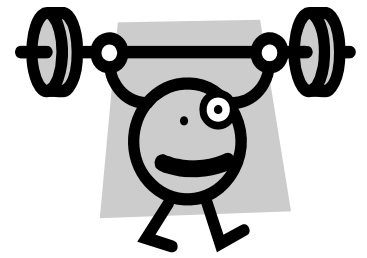
Art and Andrew are both well-known experts whose training seminars have been attended by SAS users from around the world. Their biographies are on page five of this newsletter.

Your tuition includes a full set of course notes, continental breakfast, lunch and afternoon refreshments.

The training seminars will be held at the Livonia Courtyard by Marriott, except as noted below. The will start at 8:30 am and end about 4:30 pm each day. The seminar schedule is:

- Presented by **Art Carpenter**, California Occidental Consultants
 - **June 14:** *A Quick Start to SAS/GRAPH® Software*
 - **June 15:** *From %MACRO to %MEND: An Intro. to the SAS Macro Language*
 - **June 17:** *Advanced Topics in the SAS Macro Language*
- Presented by **Andrew Karp**, Sierra Information Services
 - **June 17:** *Summarizing and Reporting Data with the SAS System*
 - (location: Dearborn Marriott)
 - **June 18:** *Getting the Most from SAS 9 Software*
 - **June 20:** *SAS System Programming Efficiencies: Tips & Techniques*
 - **June 21:** *SAS ODS for Data Analysts & Statisticians*

Seminar descriptions are available at www.Sierrainformation.com. Please contact Andrew Karp via email at Andrew@sierrainformation.com or by phone, toll-free, at 1-877-SIERRA9 if you have any questions about the seminars.



Strengthen your SAS Software skills by attending our one-day conference and these MSUG-sponsored training seminars presented by Art Carpenter and Andrew Karp in June.

Tuition for these already affordably-priced sessions is further reduced by an additional \$40 per person per seminar if you enroll for both the June 16 one-day meeting and your choice of seminars by May 28.

Forthcoming Title from SAS Press:
The Essential PROC SQL Handbook for SAS Users
By Katherine Prairie, Stone Country Consultants, Ltd.

Be on the lookout for this new title from SAS Press (formerly Books by Users, see article on page seven), which should be available for sale about the time you receive this newsletter.

The Essential PROC SQL Handbook for SAS Users is written by Katherine Prairie, a Calgary-based SAS and Oracle consultant. The pre-release version of her book, at approximately 450 pages, is packed with examples of how PROC SQL is used for a variety of data base management and analysis tasks. One of the many strengths of the text is its ability to serve as a bridge to PROC SQL for experienced BASE SAS Data Step programmers as well as a bridge for experienced SQL programmers to start using the Structured Query Language's implementation in the SAS System. The book includes chapters on PROC SQL basics, the SELECT Statement, joining multiple tables using PROC SQL, using PROC SQL to build interactive applications, and one chapter dedicated to discussing PROC SQL enhancements in SAS 9.

The author has over 20 years of experience using SAS and other data base management tools, and has also written and delivered training seminars in Alberta and elsewhere on data base management techniques. The SAS Publications Number is 58546.

Books by Users™ is now SAS® Press

New Name Reflects Enhanced Range of Offerings

After 15 years of service to the user community as the Books by Users program, SAS has changed the name of their user publications program to the SAS Press. “The name change reflects the enhanced array of user-based publications we now offer our customers,” said Julie Platt, Editor-in-Chief of the newly renamed unit. “In addition to the user-written publications on a wide range of SAS topics, we also offer our Business Series of books by industry thought leaders and co-publish texts in the Wiley/SAS Business Series, she explained. “So, we felt changing our name to SAS Press better conveys the range of services we offer the user community. Of course, we continue to seek user-written publications to support our users. Although we’ve changed our name, we maintain our focus on providing the kinds of information that will best support the SAS Software user community,” she concluded.



SAS Press

Information about the latest in SAS' publications is available from the Publications Division web site at support.sas.com/pubs.

Author(s)	Title
Dmitrienko, et al.	Analysis of Clinical Trials using SAS: A Practical Guide
Cody & Smith	Applied Statistics and the SAS Programming Language, 5th ed.
Allison	Fixed Effects Regression Methods for Longitudinal Data
Saxton, et al.	Genetic Analysis of Complex Traits Using SAS
Lehman, et al.	JMP® for Basic Univariate and Multivariate Statistics
Lafler	PROC SQL: Beyond the Basics Using SAS
Bilenas	The Power of PROC FORMAT
	Forthcoming Titles
Davis	Applied Statistics Using SAS Enterprise Guide®
Burlew	SAS Guide to Report Writing: Examples, Second Edition
Delwiche, Slaughter	The Little Enterprise Guide Book (preliminary title)
Siddiqi	Intelligent Credit Scoring (preliminary title)
Mason	In the Know: SAS Tips & Techniques from Around the Globe, 2nd, ed.
Potts	Survival Data Mining: Modeling Consumer Event Histories

**Register On-Line for the June Michigan SUG Events at
www.regonline.com/MSUG**



About the **Michigan SAS Users Group (MSUG)**

The Michigan SAS Users Group is organized to further the interests of programmers and users of SAS Software System. At our meetings we share information on building applications with SAS Software and how to better use programming tools and user interfaces. MSUG also provides a forum for informing attendees and members of career opportunities. Meetings are held approximately quarterly at various locations around the Detroit/Ann Arbor area.

**VISIT OUR WEB SITE AT
WWW.MISUG.ORG**

**Mailing Address:
Michigan SAS Users Group
PO Box 436
Ann Arbor, MI 48106**

If you wish to join MSUG, please email info@misug.org requesting that we add you to our distribution list for newsletters and meeting announcements! If your company wishes to sponsor an MSUG event, please contact info@misug.org, as well, and we will contact you.

***Please register on-line for the MSUG conference and sponsored training seminars at
www.regonline.com/MSUG***

REGISTRATION AND REFUND POLICIES

All registrations are handled via our on-line system (see URL above). This web-based system is easy to use and has a number of helpful features, including secure credit card payment processing, printable receipts and invoices, registration reminders, links to maps and other services.

Please ensure that you have obtained all necessary approvals/permissions in advance of registering for our events. We interpret a completed registration as a binding commitment to attend and pay for the events for which you have enrolled.

We accept payment via checks payable to "MSUG" (see address above), Visa, MasterCard, Amex and Discover.

Sorry, no purchase orders.

Availability of early registration discount rate ends at 5 pm EDT on May 28, 2005.

Cancellations are permitted until the end of the early registration discount period.

Requests for refunds made prior to 5 pm EDT on May 28, 2005 are subject to a \$15 processing fee for each cancelled registration for the one-day meeting and a \$65 processing fee for each enrollment in a one-day training class that is cancelled.

No refunds are made after 5 pm EDT on May 28, 2005.

Substitution of one attendee for another is permitted, without charge, at any time.

The Michigan SAS Users Group, Sierra Information Services and California Occidental Consultants reserve the right to cancel any or all of these events. Liability in the event of cancellation is limited to refund of course fees paid.

Please note that the one-day seminars are provided by vendors independent of MSUG and who are responsible for the content and delivery of their classes.

The use of cell phones, PDAs, recording devices of any kind, or laptop computers is NOT permitted during the training seminars or June 16 MSUG one-day conference.

Please contact Gary Allen of the MSUG steering committee via email at gallen@rdagroup.com if you have any questions about our registration policies or if we can be of further assistance.