



# DBMSCopy

## A Quick Introduction

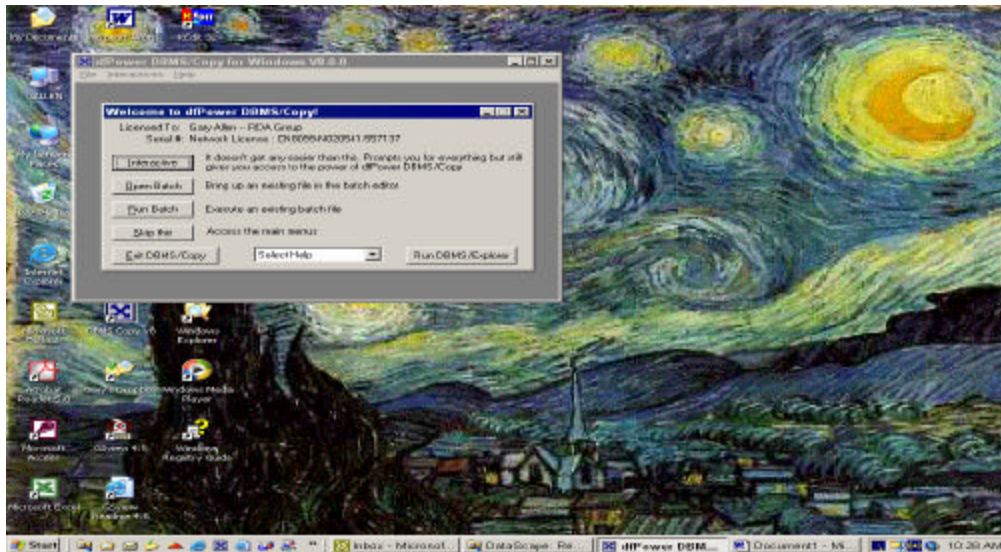
Presentation by Gary Allen



# DBMSCopy Background

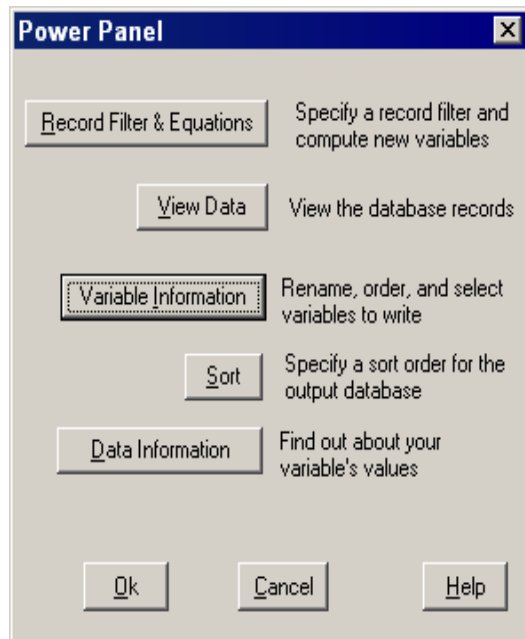
- DBMSCopy software converts data from one format to another.
- SAS bought product in 2002, and markets through DataFlux subsidiary.

# DBMSCopy



- Interactive Mode starts by default when DBMSCopy is run.

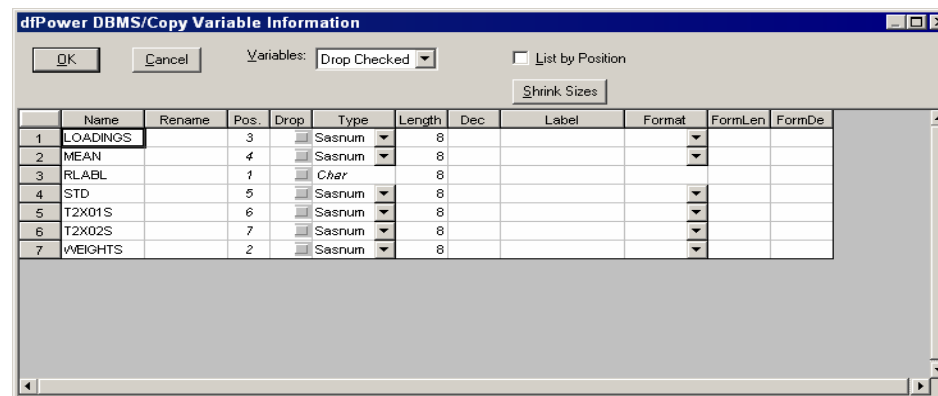
# DBMSCopy



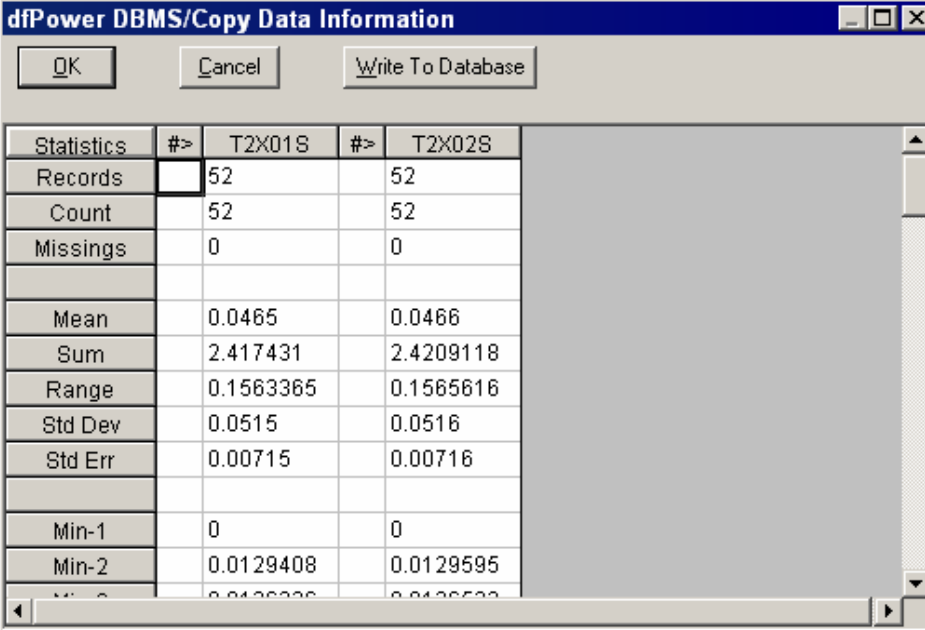
- Power Panel dialog box is key to DBMSCopy Interactive Mode.
- Power Panel Appears after Standard File Selection Dialog where source file is chosen.
- Power Panel is used to select data processing and information options.

# DBMSCopy

- Variable Information Dialog allows changes to variable properties.
- Variables can be selected to be dropped or kept.



# DBMSCopy



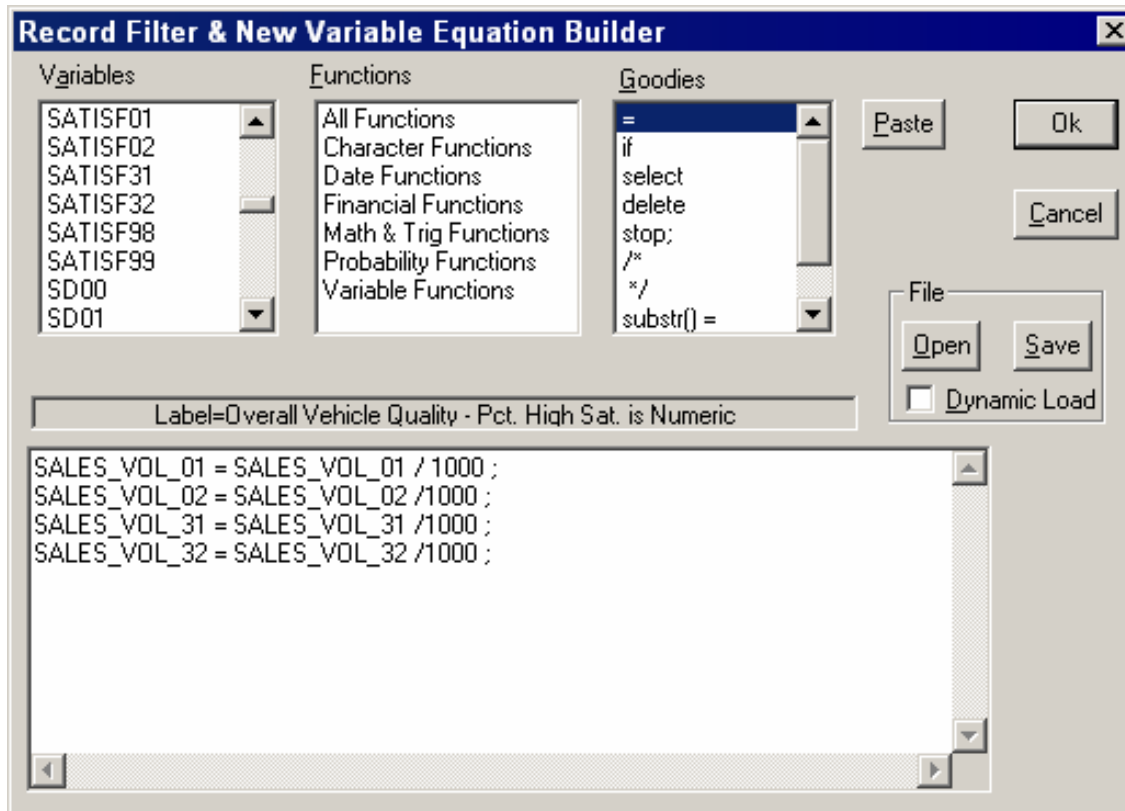
dfPower DBMS/Copy Data Information

OK Cancel Write To Database

Statistics	#>	T2X01S	#>	T2X02S
Records		52		52
Count		52		52
Missings		0		0
Mean		0.0465		0.0466
Sum		2.417431		2.4209118
Range		0.1563365		0.1565616
Std Dev		0.0515		0.0516
Std Err		0.00715		0.00716
Min-1		0		0
Min-2		0.0129408		0.0129595
Min-3		0.0129338		0.0129528

- Variable Information Screen displays stats and frequencies.
- Variable Info can be saved to output data file for later use.

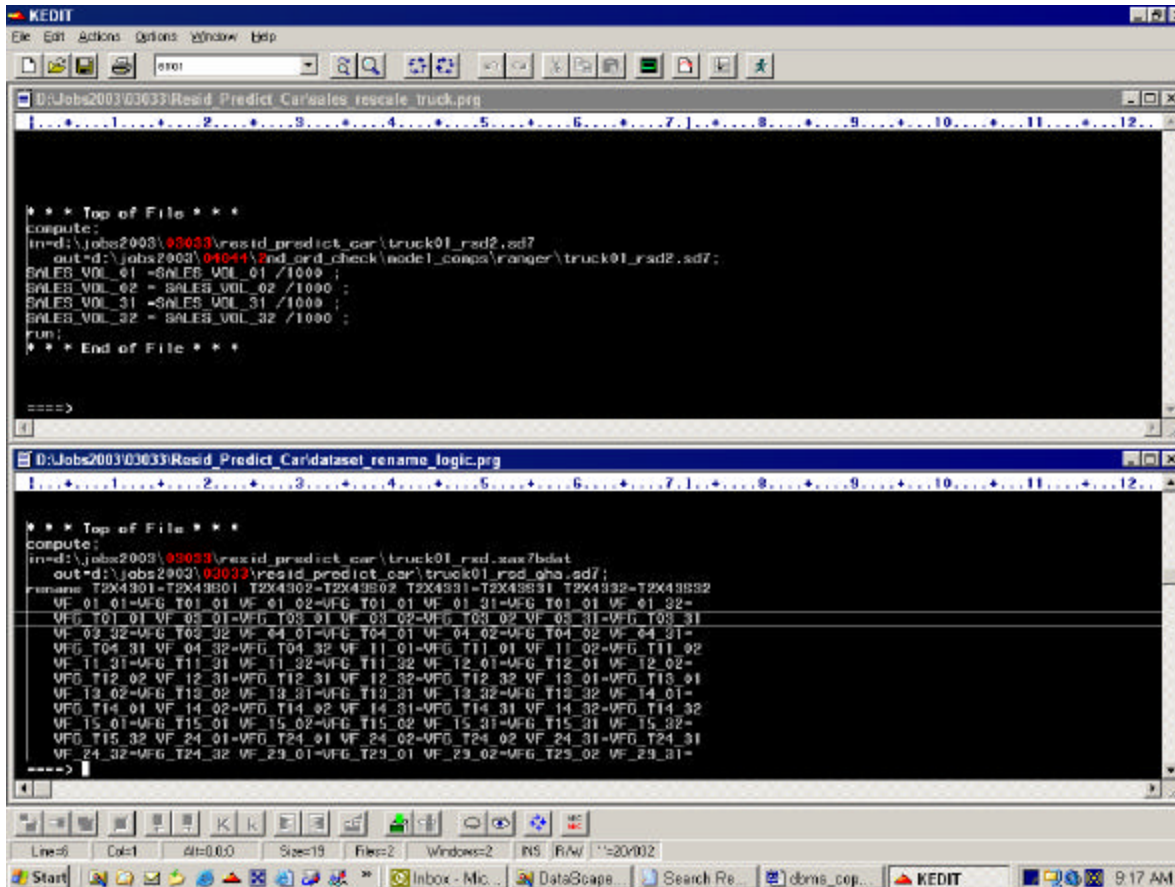
# DBMSCopy



- Filter/Eq. builder can filter data with if and where statements and create vars. with wide range of functions.

# DBMSCopy

- Interactive process can create batch code.



```
*** Top of File ***
compute;
in:d:\jobs2003\03033\resid_predict_car\truck01_rsd2.sd7
  out:d:\jobs2003\03033\resid_predic_car\truck01_rsd2.sd7;
SALES_VOL_01 = SALES_VOL_01 / 1000 ;
SALES_VOL_02 = SALES_VOL_02 / 1000 ;
SALES_VOL_31 = SALES_VOL_31 / 1000 ;
SALES_VOL_32 = SALES_VOL_32 / 1000 ;
run;
*** End of File ***

====>
```

```
*** Top of File ***
compute;
in:d:\jobs2003\03033\resid_predict_car\truck01_rsd_max7.tblat
  out:d:\jobs2003\03033\resid_predict_car\truck01_rsd_gha.sd7;
renname T2X4301-T2X4301 T2X4302-T2X4302 T2X4303-T2X4303 T2X4304-T2X4304
VF_01_01-VFG_T01_01 VF_01_02-VFG_T01_01 VF_01_31-VFG_T01_01 VF_01_32-
VFG_T01_01 VF_03_01-VFG_T03_01 VF_03_02-VFG_T03_02 VF_03_31-VFG_T03_31
VF_03_32-VFG_T03_32 VF_04_01-VFG_T04_01 VF_04_02-VFG_T04_02 VF_04_31-
VFG_T04_31 VF_04_32-VFG_T04_32 VF_11_01-VFG_T11_01 VF_11_02-VFG_T11_02
VF_11_31-VFG_T11_31 VF_11_32-VFG_T11_32 VF_12_01-VFG_T12_01 VF_12_02-
VFG_T12_02 VF_12_31-VFG_T12_31 VF_12_32-VFG_T12_32 VF_13_01-VFG_T13_01
VF_13_02-VFG_T13_02 VF_13_31-VFG_T13_31 VF_13_32-VFG_T13_32 VF_14_01-
VFG_T14_01 VF_14_02-VFG_T14_02 VF_14_31-VFG_T14_31 VF_14_32-VFG_T14_32
VF_15_01-VFG_T15_01 VF_15_02-VFG_T15_02 VF_15_31-VFG_T15_31 VF_15_32-
VFG_T15_32 VF_24_01-VFG_T24_01 VF_24_02-VFG_T24_02 VF_24_31-VFG_T24_31
VF_24_32-VFG_T24_32 VF_29_01-VFG_T29_01 VF_29_02-VFG_T29_02 VF_29_31-
VFG_T29_31
----->
```



# DBMSCopy

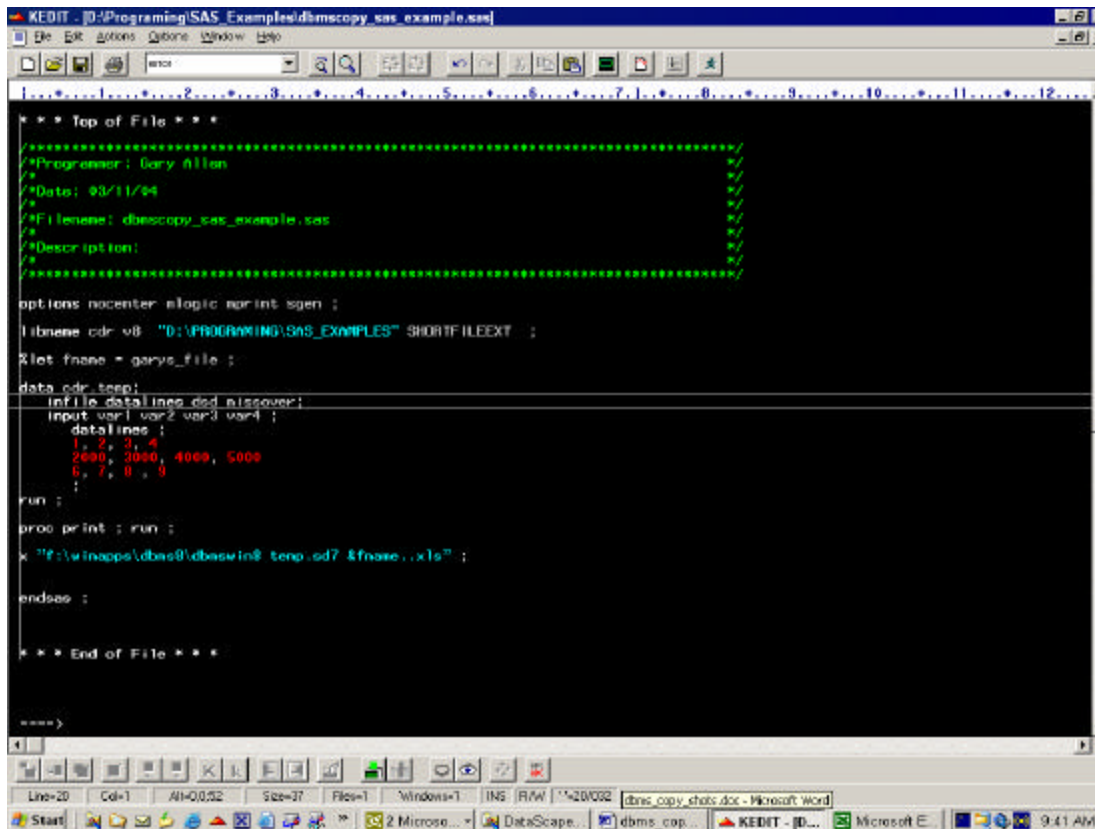
- Batch Files can be submitted through interface dialog box or through command line or windows “run” command.

- Command Line Syntax :

Batch Files: dbmswin8 PLUS file.prg

Converting Data: dbmswin8 source.ext  
target.ext

# DBMSCopy



```
*** Top of File ***
/*****
/****Programmer: Gary Allen
/****Date: 03/11/94
/****Filename: dbmscopy_sas_example.sas
/****Description:
/****
*****/

options nocenter nolog noprint nopen ;

libname odr v8 "D:\PROGRAMING\SAS_EXAMPLES" SHORTFILEEXT ;

filename garys_file ;

data odr_temp ;
  infile datalines dds missover;
  input var1 var2 var3 var4 ;
  datalines ;
  1 2 3 4
  2000 3000 4000 5000
  6 7 8 9
  ;
run ;

proc print ; run ;

x "f:\winapps\dbas8\dbaswin8 temp.od7 &fname.xls" ;

endsas ;

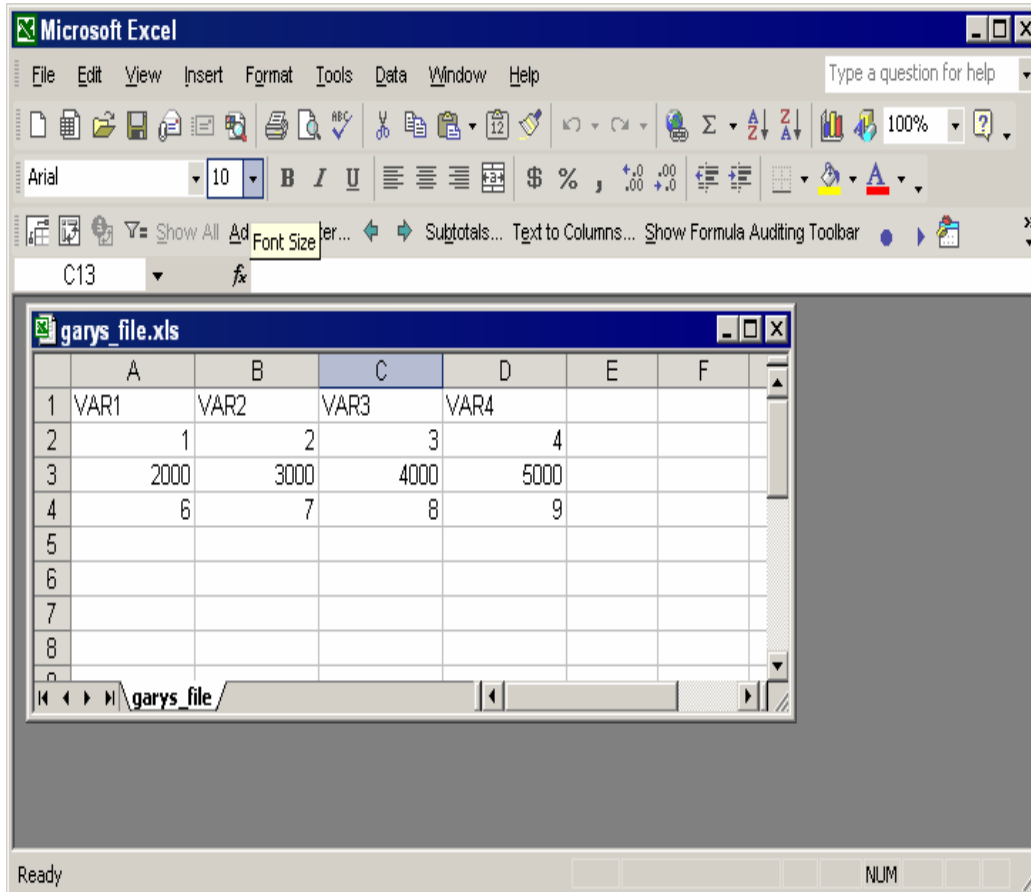
*** End of File ***

====>
```

- Command line syntax used in SAS X command to convert SAS dataset to Excel.

# DBMSCopy

- SAS dataset converted to Excel.



The screenshot shows the Microsoft Excel interface with a workbook named 'garys\_file.xls' open. The data is organized into four columns labeled VAR1, VAR2, VAR3, and VAR4. The values in the first four rows are as follows:

	VAR1	VAR2	VAR3	VAR4
1	VAR1	VAR2	VAR3	VAR4
2	1	2	3	4
3	2000	3000	4000	5000
4	6	7	8	9
5				
6				
7				
8				
9				

The status bar at the bottom of the window shows 'Ready' and 'NUM'.